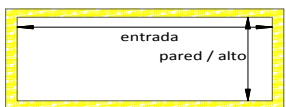
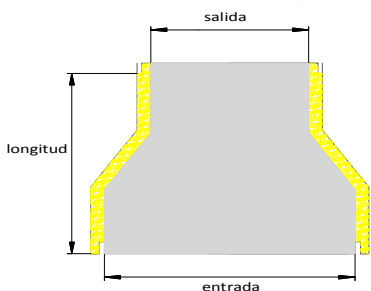
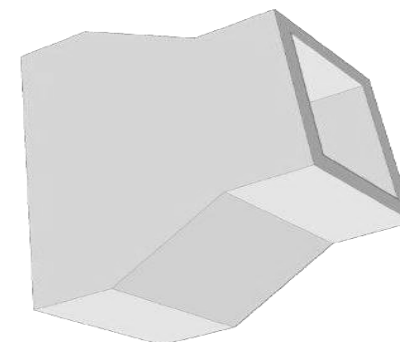
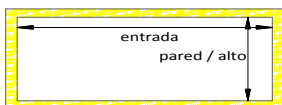
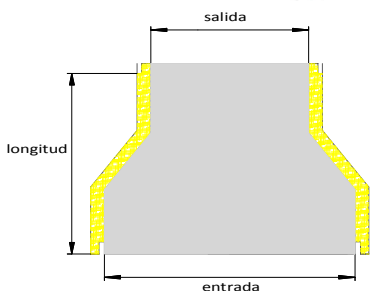
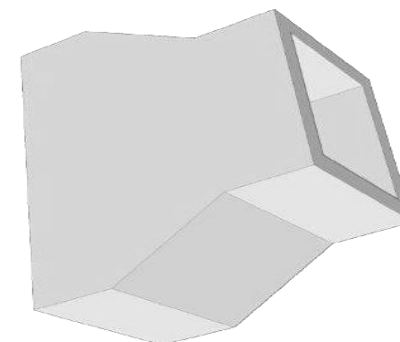


TIPO DE CONDUCTOS
REDUCCIÓN



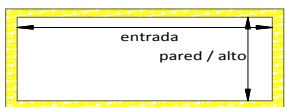
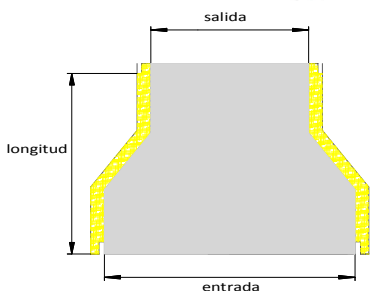
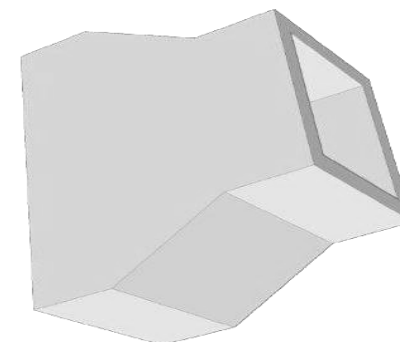
ref.	8000	long.	entrada	salida	P.V.P.								
					PARED / ALTO								
					10	15	20	25	30	35	40	45	50
8001	35	15	10	10,58	11,81	13,04	14,27	15,50	16,73	17,96	19,20	20,43	
8002	35	20	10	11,60	12,83	14,07	15,30	16,53	17,76	18,99	20,22	21,45	
8003	35	25	10	12,63	13,86	15,09	16,32	17,55	18,79	20,02	21,25	22,48	
8004	35	30	10	13,65	14,89	16,12	17,35	18,58	19,81	21,04	22,27	23,50	
8005	35	35	10	14,68	15,91	17,14	18,37	19,61	20,84	22,07	23,30	24,53	
8006	35	40	10	15,71	16,94	18,17	19,40	20,63	21,86	23,09	24,33	25,56	
8007	35	20	15	11,60	12,83	14,07	15,30	16,53	17,76	18,99	20,22	21,45	
8008	35	25	15	12,63	13,86	15,09	16,32	17,55	18,79	20,02	21,25	22,48	
8009	35	30	15	13,65	14,89	16,12	17,35	18,58	19,81	21,04	22,27	23,50	
8010	35	35	15	14,68	15,91	17,14	18,37	19,61	20,84	22,07	23,30	24,53	
8011	35	40	15	15,71	16,94	18,17	19,40	20,63	21,86	23,09	24,33	25,56	
8012	35	45	15	16,73	17,96	19,20	20,43	21,66	22,89	24,12	25,35	26,58	
8013	35	25	20	12,63	13,86	15,09	16,32	17,55	18,79	20,02	21,25	22,48	
8014	35	30	20	13,65	14,89	16,12	17,35	18,58	19,81	21,04	22,27	23,50	
8015	35	35	20	14,68	15,91	17,14	18,37	19,61	20,84	22,07	23,30	24,53	
8016	35	40	20	15,71	16,94	18,17	19,40	20,63	21,86	23,09	24,33	25,56	
8017	35	45	20	16,73	17,96	19,20	20,43	21,66	22,89	24,12	25,35	26,58	
8018	35	50	20	17,76	18,99	20,22	21,45	22,68	23,92	25,15	26,38	27,61	
8019	35	30	25	13,65	14,89	16,12	17,35	18,58	19,81	21,04	22,27	23,50	
8020	35	35	25	14,68	15,91	17,14	18,37	19,61	20,84	22,07	23,30	24,53	
8021	35	40	25	15,71	16,94	18,17	19,40	20,63	21,86	23,09	24,33	25,56	
8022	35	45	25	16,73	17,96	19,20	20,43	21,66	22,89	24,12	25,35	26,58	
8023	35	50	25	17,76	18,99	20,22	21,45	22,68	23,92	25,15	26,38	27,61	
8024	35	55	25	18,79	20,02	21,25	22,48	23,71	24,94	26,17	27,40	28,64	

TIPO DE CONDUCTOS
REDUCCIÓN



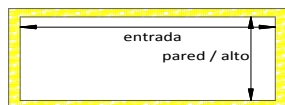
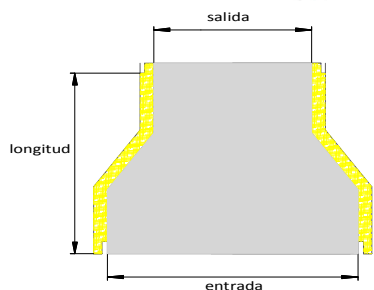
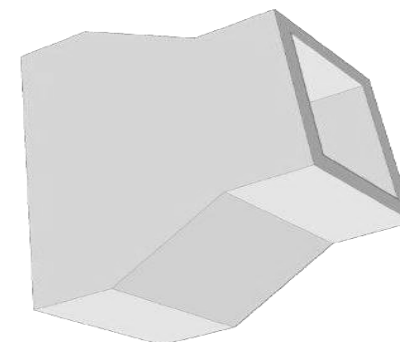
ref.	P.V.P.											
	long.	entrada	salida	PARED / ALTO								
8000				10	15	20	25	30	35	40	45	50
8025	35	35	30	14,68	15,91	17,14	18,37	19,61	20,84	22,07	23,30	24,53
8026	35	40	30	15,71	16,94	18,17	19,40	20,63	21,86	23,09	24,33	25,56
8027	35	45	30	16,73	17,96	19,20	20,43	21,66	22,89	24,12	25,35	26,58
8028	35	50	30	17,76	18,99	20,22	21,45	22,68	23,92	25,15	26,38	27,61
8029	35	55	30	18,79	20,02	21,25	22,48	23,71	24,94	26,17	27,40	28,64
8030	35	60	30	19,81	21,04	22,27	23,50	24,74	25,97	27,20	28,43	29,66
8031	35	40	35	15,71	16,94	18,17	19,40	20,63	21,86	23,09	24,33	25,56
8032	35	45	35	16,73	17,96	19,20	20,43	21,66	22,89	24,12	25,35	26,58
8033	35	50	35	17,76	18,99	20,22	21,45	22,68	23,92	25,15	26,38	27,61
8034	35	55	35	18,79	20,02	21,25	22,48	23,71	24,94	26,17	27,40	28,64
8035	35	60	35	19,81	21,04	22,27	23,50	24,74	25,97	27,20	28,43	29,66
8036	35	65	35	20,84	22,07	23,30	24,53	25,76	26,99	28,22	29,46	30,69
8037	35	45	40	16,73	17,96	19,20	20,43	21,66	22,89	24,12	25,35	26,58
8038	35	50	40	17,76	18,99	20,22	21,45	22,68	23,92	25,15	26,38	27,61
8039	35	55	40	18,79	20,02	21,25	22,48	23,71	24,94	26,17	27,40	28,64
8040	35	60	40	19,81	21,04	22,27	23,50	24,74	25,97	27,20	28,43	29,66
8041	35	65	40	20,84	22,07	23,30	24,53	25,76	26,99	28,22	29,46	30,69
8042	35	70	40	21,86	23,09	24,33	25,56	26,79	28,02	29,25	30,48	31,71
8043	35	50	45	17,76	18,99	20,22	21,45	22,68	23,92	25,15	26,38	27,61
8044	35	55	45	18,79	20,02	21,25	22,48	23,71	24,94	26,17	27,40	28,64
8045	35	60	45	19,81	21,04	22,27	23,50	24,74	25,97	27,20	28,43	29,66
8046	35	65	45	20,84	22,07	23,30	24,53	25,76	26,99	28,22	29,46	30,69
8047	35	70	45	21,86	23,09	24,33	25,56	26,79	28,02	29,25	30,48	31,71
8048	35	75	45	22,89	24,12	25,35	26,58	27,81	29,05	30,28	31,51	32,74

TIPO DE CONDUCTOS
REDUCCIÓN



ref.	P.V.P.											
	long.	entrada	salida	PARED / ALTO								
8000				10	15	20	25	30	35	40	45	50
8049	35	55	50	18,79	20,02	21,25	22,48	23,71	24,94	26,17	27,40	28,64
8050	35	60	50	19,81	21,04	22,27	23,50	24,74	25,97	27,20	28,43	29,66
8051	35	65	50	20,84	22,07	23,30	24,53	25,76	26,99	28,22	29,46	30,69
8052	35	70	50	21,86	23,09	24,33	25,56	26,79	28,02	29,25	30,48	31,71
8053	35	75	50	22,89	24,12	25,35	26,58	27,81	29,05	30,28	31,51	32,74
8054	35	80	50	23,92	25,15	26,38	27,61	28,84	30,07	31,30	32,53	33,77
8055	35	60	55	19,81	21,04	22,27	23,50	24,74	25,97	27,20	28,43	29,66
8056	35	65	55	20,84	22,07	23,30	24,53	25,76	26,99	28,22	29,46	30,69
8057	35	70	55	21,86	23,09	24,33	25,56	26,79	28,02	29,25	30,48	31,71
8058	35	75	55	22,89	24,12	25,35	26,58	27,81	29,05	30,28	31,51	32,74
8059	35	80	55	23,92	25,15	26,38	27,61	28,84	30,07	31,30	32,53	33,77
8060	35	85	55	24,94	26,17	27,40	28,64	29,87	31,10	32,33	33,56	34,79
8061	35	65	60	20,84	22,07	23,30	24,53	25,76	26,99	28,22	29,46	30,69
8062	35	70	60	21,86	23,09	24,33	25,56	26,79	28,02	29,25	30,48	31,71
8063	35	75	60	22,89	24,12	25,35	26,58	27,81	29,05	30,28	31,51	32,74
8064	35	80	60	23,92	25,15	26,38	27,61	28,84	30,07	31,30	32,53	33,77
8065	35	85	60	24,94	26,17	27,40	28,64	29,87	31,10	32,33	33,56	34,79
8066	35	90	60	25,97	27,20	28,43	29,66	30,89	32,12	33,35	34,59	35,82
8067	35	70	65	21,86	23,09	24,33	25,56	26,79	28,02	29,25	30,48	31,71
8068	35	75	65	22,89	24,12	25,35	26,58	27,81	29,05	30,28	31,51	32,74
8069	35	80	65	23,92	25,15	26,38	27,61	28,84	30,07	31,30	32,53	33,77
8070	35	85	65	24,94	26,17	27,40	28,64	29,87	31,10	32,33	33,56	34,79
8071	35	90	65	25,97	27,20	28,43	29,66	30,89	32,12	33,35	34,59	35,82
8072	35	95	65	26,99	28,22	29,46	30,69	31,92	33,15	34,38	35,61	36,84

TIPO DE CONDUCTOS
REDUCCIÓN



ref.	long.	entrada	salida	P.V.P.								
				PARED / ALTO								
8000				10	15	20	25	30	35	40	45	50
8073	35	75	70	22,89	24,12	25,35	26,58	27,81	29,05	30,28	31,51	32,74
8074	35	80	70	23,92	25,15	26,38	27,61	28,84	30,07	31,30	32,53	33,77
8075	35	85	70	24,94	26,17	27,40	28,64	29,87	31,10	32,33	33,56	34,79
8076	35	90	70	25,97	27,20	28,43	29,66	30,89	32,12	33,35	34,59	35,82
8077	35	95	70	26,99	28,22	29,46	30,69	31,92	33,15	34,38	35,61	36,84
8078	35	100	70	28,02	29,25	30,48	31,71	32,94	34,18	35,41	36,64	37,87
8079	35	80	75	23,92	25,15	26,38	27,61	28,84	30,07	31,30	32,53	33,77
8080	35	85	75	24,94	26,17	27,40	28,64	29,87	31,10	32,33	33,56	34,79
8081	35	90	75	25,97	27,20	28,43	29,66	30,89	32,12	33,35	34,59	35,82
8082	35	95	75	26,99	28,22	29,46	30,69	31,92	33,15	34,38	35,61	36,84
8083	35	100	75	28,02	29,25	30,48	31,71	32,94	34,18	35,41	36,64	37,87
8084	35	85	80	24,94	26,17	27,40	28,64	29,87	31,10	32,33	33,56	34,79
8085	35	90	80	25,97	27,20	28,43	29,66	30,89	32,12	33,35	34,59	35,82
8086	35	95	80	26,99	28,22	29,46	30,69	31,92	33,15	34,38	35,61	36,84
8087	35	100	80	28,02	29,25	30,48	31,71	32,94	34,18	35,41	36,64	37,87
8088	35	90	85	25,97	27,20	28,43	29,66	30,89	32,12	33,35	34,59	35,82
8089	35	95	85	26,99	28,22	29,46	30,69	31,92	33,15	34,38	35,61	36,84
8090	35	100	85	28,02	29,25	30,48	31,71	32,94	34,18	35,41	36,64	37,87
8091	35	95	90	26,99	28,22	29,46	30,69	31,92	33,15	34,38	35,61	36,84
8092	35	100	90	28,02	29,25	30,48	31,71	32,94	34,18	35,41	36,64	37,87
8093	35	100	95	28,02	29,25	30,48	31,71	32,94	34,18	35,41	36,64	37,87